

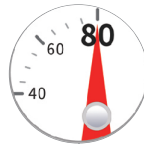


Hematology Analyzer

 (Made in India)

A synonym for precision

Catalog No.: ADX-HEME-340



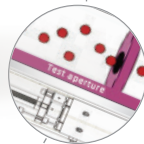
THROUGHPUT

Throughput up to 80 samples/hour with whole blood mode



DISPLAY TYPE

10.4 inch color display screen with touch panel



LEADING TECHNOLOGY

- Cell pulse baseline tracking and restore technology
- High voltage burning technology
- Built-in liquid sensor
- High speed pulse collecting and discrimination
- Intelligent floating threshold technology



STORAGE

Large storage capacity, 500,000 results including histogram & Patient information



SAMPLE VOLUME

Minimum volume 9µl whole blood

Specifications

Detection channel	Double -channel for counting
Counting modes	Whole blood mode, pre-diluted mode
Detection principle	Impedance method (WBC, RBC,PLT) and cyanide free colorimetric method (HGB) The detection items include maximum 21 parameters (WBC, Lym#, Mid#, Gran#, Lym%, Mid%, Gran%, RBC, HCT, MCV, MCH, MCHC, RDW-CV, RDW-SD, PLT, MPV, PDW, PCT, HGB, P-LCC, P-LCR) 3 histograms, alarm for abnormal erythrocytes, leukocytes and platelets
Reagent	3-Part diluent and lyse
Report print	Built-in thermal printer with multiple report templates.
Input/Output	4 USB ports and Bi-directional LIS connection, support USB keyboard, mouse, USB disk and USB printer
Dimension	420(L) x 295(W) x 430(H)mm
Net weight	≤ 28kg