



RELIABLE



ACCURATE



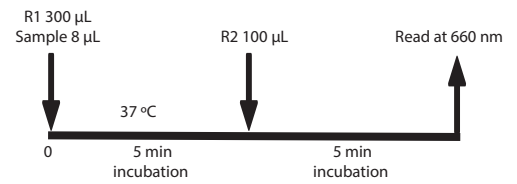
COST EFFECTIVE

TRUEchemie HbA1c Test Kit

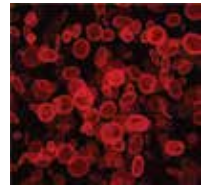
Quantitative determination of Hemoglobin A1c (HbA1c) in human whole blood

Immunoturbidimetric assay

- Ready-to-use, stable liquid reagent of 3:1 ratio
- Wide measuring ranges from 2-16 %
- Stable for 30 days on board (2-8 °C)
- Excellent correlation with HPLC
- No cross reaction with other variants
- Packed with 5 calibrators



Code	Product	Pack size
ADX941	TRUEchemie HbA1c Test Kit with Calibrator	1 x 20 mL
ADX942	TRUEchemie HbA1c Test Kit with Calibrator	2 x 20 mL
ADX943	TRUEchemie HbA1c Test Kit without Calibrator	1 x 20 mL
ADX944	TRUEchemie HbA1c Test Kit without Calibrator	2 x 20 mL
ADX945	TRUEchemie HbA1c Calibrator Kit	5 x 1 mL

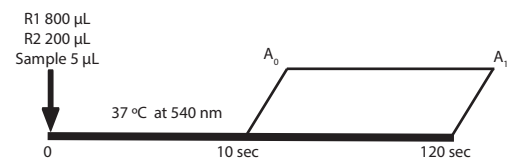


TRUEchemie CRP Test Kit

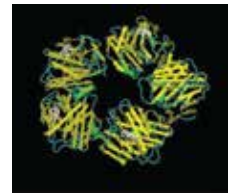
Quantitative determination of C - Reactive Protein (CRP) in human serum

Immunoturbidimetric assay

- Ready-to-use, stable liquid reagent of 4:1 ratio
- Detection range of 2 to 150 mg/L
- No prozone effect up to 1000 mg/L
- Bilirubin (≤ 20 mg/dL), lipemia (≤ 10 g/L) and rheumatoid factors (≤ 300 U/mL) do not interfere
- Reaction time just 2 minutes
- Packed with calibrator



Code	Product	Pack size
ADX911	TRUEchemie CRP Test Kit with Calibrator	25 mL
ADX912	TRUEchemie CRP Test Kit with Calibrator	50 mL

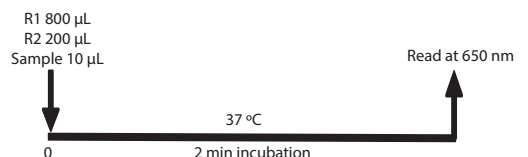


TRUEchemie RF/RA Test Kit

Quantitative determination of Rheumatoid Factor (RF) in human serum or plasma

Immunoturbidimetric assay

- Ready-to-use, stable liquid reagent of 4:1 ratio
- Detection range of 6 to 160 U/mL
- No prozone effect up to 800 U/mL
- Hemoglobin (≤ 10 g/L), bilirubin (≤ 20 mg/dL) and lipemia (≤ 10 g/L) do not interfere
- Reaction time just 2 minutes
- Packed with calibrator



Code	Product	Pack size
ADX921	TRUEchemie RF/RA Test Kit with Calibrator	25 mL
ADX922	TRUEchemie RF/RA Test Kit with Calibrator	50 mL

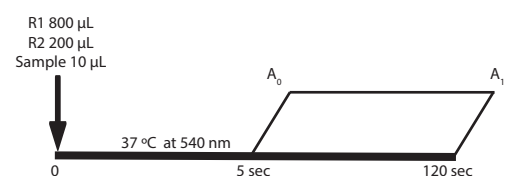


TRUEchemie ASO Test Kit

Quantitative determination of Antistreptolysin O (ASO) in human serum

Immunoturbidimetric assay

- Ready-to-use, stable liquid reagent of 4:1 ratio
- Detection range of 20 to 800 U/mL
- No prozone effect up to 3000 U/mL
- Bilirubin (≤ 20 mg/dL), hemoglobin (≤ 10 g/L), lipemia (≤ 10 g/L) and rheumatoid factors (≤ 600 U/mL) do not interfere
- Reaction time just 2 minutes
- Packed with calibrator



Code	Product	Pack size
ADX901	TRUEchemie ASO Test Kit with calibrator	25 mL
ADX902	TRUEchemie ASO Test Kit with calibrator	50 mL

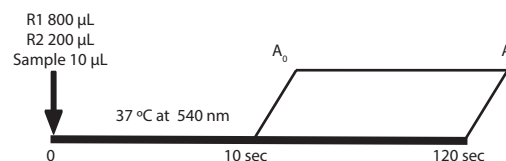


TRUEchemie Microalbumin Test Kit

Quantitative determination of Microalbumin in human urine

Immunoturbidimetric assay

- Ready-to-use, stable liquid reagent of 4 :1 ratio
- Detection range of 2 to 150 mg/L
- No prozone effect up to 1000 mg/L
- Glucose (≤ 2 g/L), hemoglobin (≤ 10 g/L) and creatinine (≤ 3 g/L) do not interfere
- Reaction time just 2 minutes
- Packed with calibrator



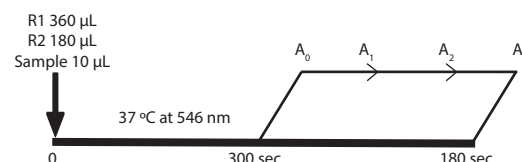
Code	Product	Pack size
ADX931	TRUEchemie Microalbumin Test Kit with Calibrator	25 ml
ADX932	TRUEchemie Microalbumin Test Kit with Calibrator	50 ml

TRUEchemie ADA Test Kit

Quantitative determination of Adenosine Deaminase (ADA) in human serum or plasma

PNP - XOD method

- Ready-to-use, stable liquid reagent of 2:1 ratio
- Linearity up to 200 U/L
- Hemoglobin (≤ 800 mg/dL), Intralipid (≤ 1000 mg/dL) and ascorbic acid (≤ 50 mg/dL) do not interfere
- Packed with calibrator



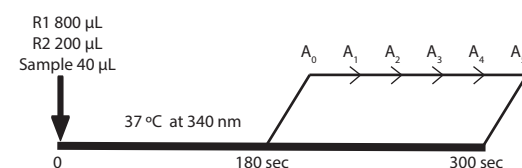
Code	Product	Pack size
ADX391	TRUEchemie ADA Test Kit	1 x 15 mL
ADX392	TRUEchemie ADA Test Kit	4 x 15 mL

TRUEchemie CK MB Test Kit

Quantitative determination of Creatinine Kinase MB (CK MB) in human serum

IFCC method

- Ready-to-use, stable liquid reagent of 4:1 ratio
- Detection range of 1.9 to 1000 U/L
- Glucose (≤ 7 g/L), bilirubin (≤ 600 μ mol/L), hemoglobin (≤ 1.25 g/L) and triglycerides (≤ 2.5 g/L) do not interfere
- Factor or calibrator-based assay



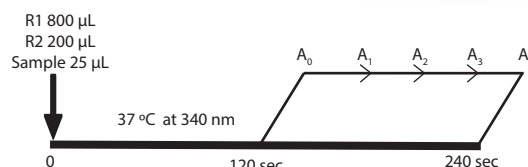
Code	Product	Pack size
ADX351	TRUEchemie CK MB Test Kit	2 x 25 mL

TRUEchemie CK NAC Test Kit

Quantitative determination of Creatinine Kinase (CK) in human serum

IFCC method

- Ready-to-use, stable liquid reagent of 4:1 ratio
- Detection range of 5 to 1200 U/L
- Glucose (≤ 7 g/L), bilirubin (≤ 600 μ mol/L), hemoglobin (≤ 1.25 g/L) and triglycerides (≤ 2.5 g/L) do not interfere
- Factor or calibrator-based assay



Code	Product	Pack size
ADX342	TRUEchemie CK NAC Test Kit	2 x 25 mL

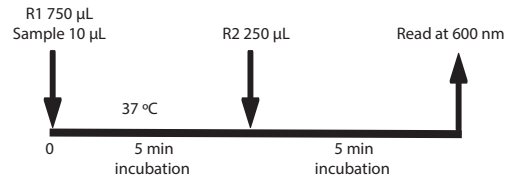
TRUEchemie Direct HDL Cholesterol Test Kit



Quantitative determination of High Density Lipoprotein (HDL) cholesterol in human serum or plasma

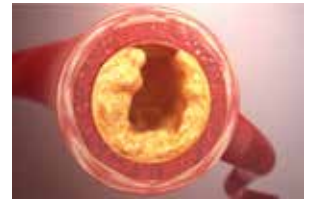
POLYMER - DETERGENT method

- Ready-to-use, stable liquid reagent of 3:1 ratio
- Detection range of 2.5 - 200 mg/dL
- Hemoglobin (≤ 100 mg/dL), Bilirubin (≤ 20 mg/dL) were found to exhibit negligible interference ($< 5\%$)
- Packed with calibrator



Code	Product	Pack size
ADX321	TRUEchemie Direct HDL Cholesterol Test Kit (calibrator)	1 x 40 mL
ADX322	TRUEchemie Direct HDL Cholesterol Test Kit (calibrator)	2 x 40 mL

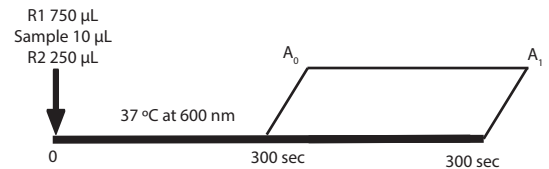
TRUEchemie Direct LDL Cholesterol Test Kit



Quantitative determination of Low Density Lipoprotein (LDL) cholesterol in human serum or plasma

POLYMER - DETERGENT method

- Ready-to-use, stable liquid reagent of 3:1 ratio
- Detection range of 5 - 500 mg/dL
- Hemoglobin (≤ 400 mg/dL), bilirubin (≤ 20 mg/dL) and triglycerides (≤ 1500 mg/dL) do not interfere
- Packed with calibrator



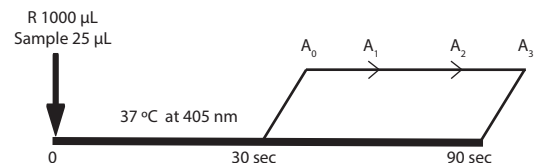
Code	Product	Pack size
ADX331	TRUEchemie Direct LDL Cholesterol Test Kit (calibrator)	1 x 40 mL
ADX332	TRUEchemie Direct LDL Cholesterol Test Kit (calibrator)	2 x 40 mL

TRUEchemie Alpha Amylase Test Kit

Quantitative determination of Alpha Amylase in human serum or plasma

CNPG3 method

- Ready-to-use, single reagent
- Linearity up to 2000 U/L
- Bilirubin (mixed isomers) $< 10\%$ interference up to 600 $\mu\text{mol/L}$, haemolysis $< 10\%$ interference up to 5 g/L and lipemia $< 10\%$ interference up to 5 g/L
- Factor or calibrator-based assay



Code	Product	Pack size
ADX261	TRUEchemie ALPHA AMYLASE Test Kit	2 x 10 mL
ADX262	TRUEchemie ALPHA AMYLASE Test Kit	4 x 10 mL



American Technology | For India

www.athnesedx.com | info@athnesedx.com | +91-44-22541131
Module No. 407 & 408, 4th Floor, TICEL Bio Park II, No. 5, CSIR Road
Taramani, Chennai - 600113, INDIA